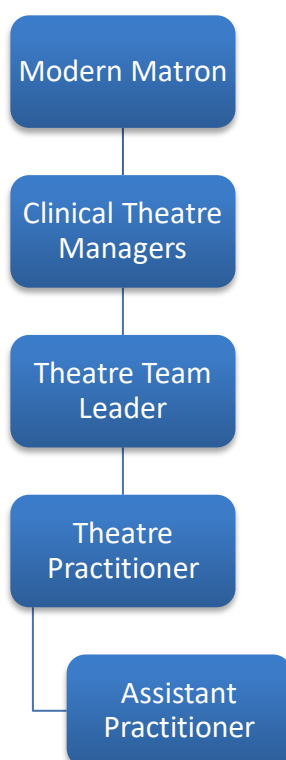


## JOB DESCRIPTION

<b>Job Title:</b>	Theatre Practitioner
<b>Band/Pay:</b>	Band 5
<b>Department:</b>	Day Surgery/Outpatients Department

### *Matron-Inpatient, Theatres and Day Surgery Unit*



### Job overview

To provide high quality nursing care for all patients on the Day Case Pathway including Outpatient Dept Post-Operative care and discharge.

---

## **Main duties of the job**

- To be responsible for the delivery of high-quality patient focused care
- To provide and maintain a safe environment for all patients attending theatres and outpatient dept
- To co-ordinate and carry out peri-operative care with minimal supervision
- To participate as a scrubbed or circulating member of the theatre team
- To Lead a theatre list in the absence of the team leader
- To Lead outpatient dept clinics in the absence of the clinic nurse

---

## **About your new team and department**

We are a small, unique and caring bespoke unit providing mainly plastics and maxillo facial surgery. Although we also offer hernia and carpal tunnel procedures all under local anaesthesia. Our out-patients clinics cover a wide range of clinical specialities as well as our dedicated nurse led dressing/ graft check clinics.

---

## **Detailed job description and responsibilities**

- Perform comprehensive assessment of patients intra operative nursing needs, plan, implement and evaluate, care delivery according to patients' healthcare needs
- To demonstrate high standards of clinical practice
- To ensure high standards of patient care is given in accordance with agreed policies and procedures
- To ensure effective assessment, planning, implementation and evaluation of patient care through the development of written care plans
- Work collaboratively with other professionals to ensure that the arrival and departure of patients in the theatre suite, is in accordance with policy
- Advise unit leader of proposed changes in the operating list, to ensure that patient safety and efficient safe service is maintained
- Accountable for own professional actions
- To ensure that all learners are guided and assessed to effectively achieve their objectives and standards of care
- To develop effective communication with the multi-disciplinary team, relatives and other nursing staff to ensure they receive clear and accurate information
- Responsible for planning the work load for a theatre list
- Promote and follow infection control policy. Adhere to handwashing procedure
- Recognise and respond to emergency situations
- Supervise and participate in the education and training of other members of the nursing team
- Participate in all elements of the WHO checklist
- Responsible for obtaining and inputting patients IT data, checking consent, relevant information/documentation and maintaining appropriate charts/records

### **Responsibility for supervision, leadership and management**

- Maintain active status on NMC register
- Act always in accordance with NMC code of conduct and guiding documents
- Maintain up to date skills and knowledge and maintain awareness of professional issues
- Has a responsibility to access clinical supervision in line with the trust policy and framework
- To ensure the efficient and effective use of all available resources
- To participate in team building/communication activities to develop a cohesive/supportive and effective unit team
- Report any accidents, incidents or near misses following incident reporting procedure
- To take charge of the unit in the absence of ward leader, ensuring patient and staff safety is maintained at all times and supervising staff, ensuring they work to their capabilities
- To adhere to all unit and trust policies and procedures to ensure a safe environment for patients, visitors and staff, to maintain quality standards
- To be flexible, in rotating shifts and working in other areas of the unit as well as the theatre area as required
- Contribute to the development of services
- Promote and follow national service framework for children and young people.
- Understand the roles and responsibilities for safeguarding and promoting the welfare of children and young people and have a responsibility to access child protection training

### **Responsibility for education and development**

- Act as a mentor/coach and assessor to pre and post registration learners
- Lead responsibility for a specific function or area of knowledge/skills within the team
- Keep up to date with current practices in peri operative practice
- Assist in providing an environment conducive to learning in which staff are able to develop

### **Communication and working relationships**

- To keep patients and relatives informed of their condition while in the unit
- Maintain patient record in line with professional guidelines on a daily basis
- Participate in responding to verbal complaints and where possible find a resolution
- Reporting to line manager action taken or action to be taken
- Communicate with members of the multi-disciplinary team
- Supervise and direct registered and support workers

## PERSON SPECIFICATION

Attributes	Essential	Desirable
<b>Qualifications and training</b>	<ul style="list-style-type: none"> <li>Registered Nurse (NMC)/ Registered Operating Department Practitioner (HCPC)</li> </ul>	<ul style="list-style-type: none"> <li>Post Registration theatre experience</li> </ul>
<b>Knowledge and experience</b>	<ul style="list-style-type: none"> <li>Ability to assess, plan and evaluate patient care</li> <li>Able to work as a member of a team</li> </ul>	<ul style="list-style-type: none"> <li>Evidence of Continuous education and professional development</li> <li>Mentorship qualification</li> </ul>
<b>Specific Skills</b>	<ul style="list-style-type: none"> <li>Organisational and Leadership skills</li> <li>Research and Development awareness</li> <li>Effective verbal and written communication Skills</li> <li>IT Skills</li> <li>Excellent interpersonal skills</li> </ul>	<ul style="list-style-type: none"> <li>Multiskilling- demonstrate competency in surgery, recovery and outpatient clinics</li> </ul>
<b>Requirements due to work environment/conditions</b>	<ul style="list-style-type: none"> <li>Able to be an effective leader in the absence of the Unit manager</li> <li>Able to manage day to day problems/ issues or complaints effectively</li> <li>Frequent contact with body fluids, foul linen</li> </ul>	
<b>Physical skills</b>	<ul style="list-style-type: none"> <li>Highly developed Physical/ clinical skills where accuracy is important</li> </ul>	
<b>Physical effort</b>	<ul style="list-style-type: none"> <li>Walk/ stand for majority of shift</li> <li>Moving and handling of patients and equipment</li> </ul>	

	<ul style="list-style-type: none"> <li>• Wearing of lead aprons</li> <li>• Manual dexterity for setting up equipment and safe use of medical devices</li> </ul>
<b>Emotional effort</b>	<ul style="list-style-type: none"> <li>• Counselling/ supporting staff/ patients/ relatives</li> </ul>
<b>Mental effort</b>	<ul style="list-style-type: none"> <li>• Concentration in theatre, setting up theatre, checking patients in, assisting during operations</li> <li>• Discharge Planning</li> </ul>