

## KEY LOCAL INFORMATION

<b>Job Title:</b>	Clinical Psychologist/ Mental Wellbeing Integrated Network Team (MINT) Clinical Lead
<b>Band:</b>	Band 8a
<b>Hours:</b>	Full time, 37.5 hours per week
<b>Base:</b>	South Bristol Community Base – to be confirmed
<b>Reports to:</b>	Associate Director CPI, MINT Team Manager
<b>Professionally Accountable to:</b>	CPI Director

### *Key Information*

Would you like to clinically lead our **new** team to help people easily access the mental health support they need in Bristol? If so, we would love to hear from you. In total we will be advertising **three** Clinical Psychology posts into three new Bristol teams. This role is to cover South Bristol (others will be advertised for north and central/east). This will give you the opportunity to find ways to work together (for example in delivering training) and to develop peer support and supervision from others in the same role.

Trailblazing and innovative times are happening within Mental Health provision. If you believe in a holistic approach to supporting individuals who are struggling with their mental health, would like to lead a team with multiple partners and be involved in forming a brand new service then this is the job for you.

In Bristol we are redesigning our community mental health services to help people get the care they need, quickly and close to home. We are developing a new model, bringing together Primary and Secondary care, Local Authority and Voluntary sector services, into new Integrated Mental Health Teams. We aim to support individuals who can fall in the 'gaps' of current pathways, making sure that they can have the personalised support they need with services around them.

Supported by the Complex Psychological Therapies Team you will provide clinical leadership to the newly formed Mental Wellbeing Integrated Network Teams (MINT) and help to develop the service. You will be providing leadership and training as well as delivering specialist psychological assessment and therapy, consultation and supporting MINT staff in delivering psychological interventions under supervision. The ability to work collaboratively with multidisciplinary teams and across networks will be essential to developing your role. You will need to be well organised with the ability to prioritise your work according to clinical need and liaise effectively with team colleagues and professionals in other agencies. It will be important for applicants to be aware of the latest evidence-based interventions and be able to evidence outcomes.

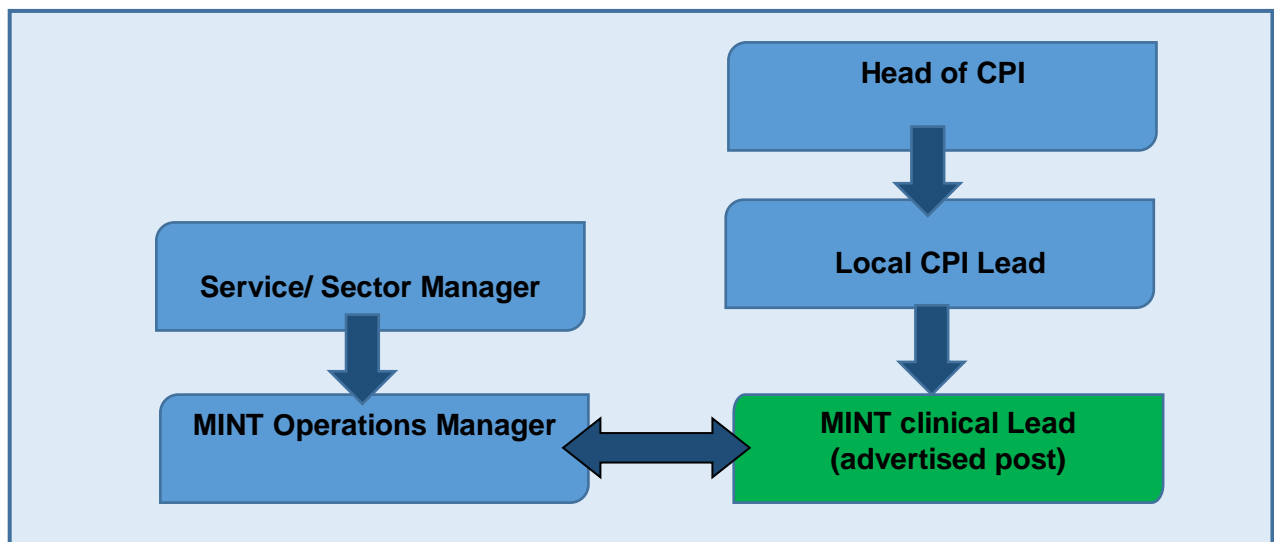
You will also be a fundamental participant in the development of this service. This includes and not limited to, building community connections, service provision, development of

therapies, supervision systems and ongoing growth plans. You will be highly influential in the implementation and provision of the Community Mental Health Framework within Bristol.

**At AWP we actively encourage applicants from all backgrounds; we are particularly keen to encourage applications from people from Black, Asian and minority ethnic backgrounds, those with disabilities and from the LGBTQ+ community. We want people to bring their unique blend of experiences, backgrounds, perspectives and knowledge to AWP, as diversity makes us stronger.**

**We are committed to address issues of structural inequalities and oppression that often create barriers in the provision of equitable care for the service user groups in the locality.**

### ***Organisational Chart***



### ***Further Information***

The successful candidate will have the opportunity to both work closely with and be supported by the other 8a MINT team psychologists, and to work directly with the CPI. The CPI are a friendly and supportive team, who are highly valued within local services. They offer a range of activities to support psychologically informed care within the secondary mental health service and is comprised of multidisciplinary professions, including Clinical Psychologists, Arts Psychotherapists, Medical Psychotherapists and Specialist Nurses.

You will receive excellent support and supervision from more senior and well-established CPI members. There are also opportunities to link with clinical psychologist colleagues and participate in regular case presentations and peer learning and development through the CPI. There will also be opportunities for continuing professional development and development of innovative research projects. We also have close links to the University of Bath, the University of Exeter and the University of South Wales and there will be

opportunities for you to participate in teaching and supervision of trainees and Clinical Associate Psychologists (CAPs)

If you are interested in this opportunity to innovate mental health services and would like to discuss the role in more detail, please contact Beth Perry/ Jennie Dickerson (CPI) on 0117 9195680 ([beth.perry@nhs.net](mailto:beth.perry@nhs.net)/ [jennie.dickerson@nhs.net](mailto:jennie.dickerson@nhs.net)).