

## Job description

<b>Post</b>	Band 5 Cardiac Physiologist
<b>Band</b>	band 5
<b>Department</b>	Cardiac Investigations
<b>Responsible to</b>	Leanne Kelly
<b>Professionally Accountable to</b>	Leanne Kelly
<b>Date written</b>	01/08/2023
<b>Written by</b>	Leanne Kelly

## Job summary

Cardiac Investigations is looking for a Band 5 Cardiac physiologist to join a busy cardiology department.

We are looking for newly qualified PTP/Apprentice applicants that have completed the formal training but would like to develop their skills further within the invasive Cardiology.

We will consider suitably competent student who is currently in their last year of study who can independently analyse Holter and loop recorders, lead exercise tolerance testing and assisting in Physiologist led Tilt testing and who are working towards independently performing an Angio list.

The main duties include: Analysis of holter and loop recorders, Lead low risk exercise tolerance tests, Lead Physician led TILTS, Assist in ambulatory monitoring and ECG's when required, Assist in the Catheter Lab and has an interest in Cardiac Rhythm Management.

The successful candidate should have excellent communication skills and able to adapt these skills to suit the situation, you need to be friendly, hardworking and work well in a team.

The successful candidate should have good organisational skills, be able to organise own work load and be flexible to cover all areas of non-invasive diagnostic tests whilst working towards independent duties within the cathlab.

This is a good opportunity to build a strong foundation within Cardiology with the possibility of further formal training within Cardiac Rhythm management to obtain formal accreditation. This is dependent on performance and personal objectives.



Compassion



Accountability



Respect

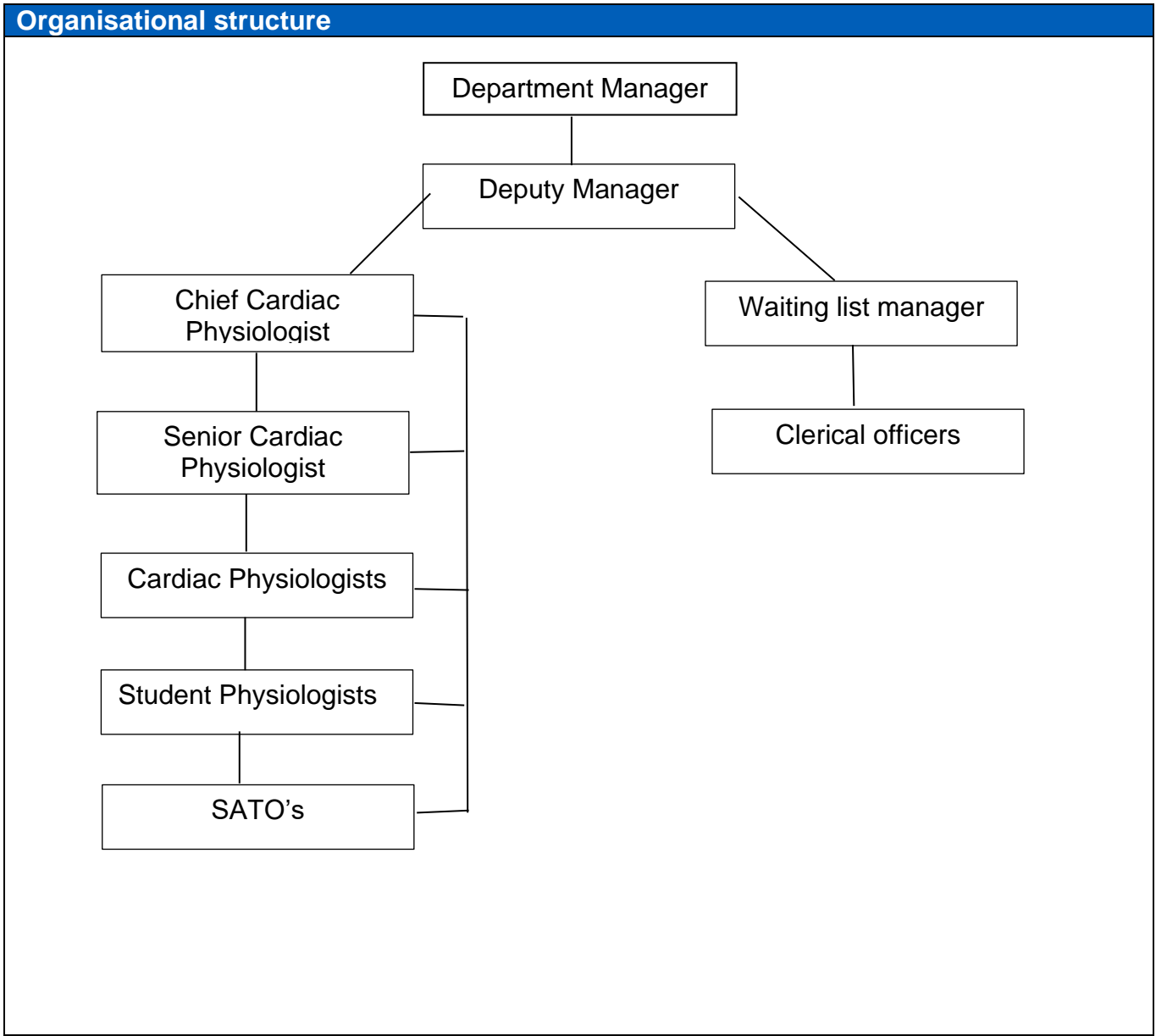


Integrity



Courage

Key working relationships
Colleagues and patients



### Main duties and responsibilities

- You will be expected to:
- Analyse tapes and reveals independently at a high level,
- Train juniors in rhythm recognition
- Run low risk Exercise tests with a student or ECG technician
- Run Physician led TILT tests and be the second Physiologist in Physiologist led TILTS
- Help in the ECG department when cover is required
- Opportunities to learn CRM with a view to follow the departmental training program, Performing a range of routine and urgent ECG's, Fitting Cardiac Monitors
- Work towards becoming proficient in the Cath lab
  
- Organising own workload
- Working autonomously
- Checking and Prioritising referrals
- Follow all departments policies and procedures
- Demonstrating own duties to others
- Recording and storing patient data
- Recognising when to ask for senior support
- Maintaining stock levels in your daily working area
- Administration
- Recognising abnormal results
- Following direction from Cardiac Physiologists
- Continue to keep up with academic work in line with proposed time frames

### Statutory and miscellaneous

- Take responsibility to ensure that Professional Registration is up to date at all times and does not lapse or expire and to inform line management immediately with any concerns or if registration lapses or expires. (all registered staff)
- This post involves access to patients and their data including children and/or vulnerable adults as defined by the Disclosure and Barring Service (DBS). It will therefore be necessary to apply for and be in receipt of a satisfactory **standard DBS check** of the post holder. **(this statement relates to patient facing but non clinical role)**

- This post involves treatment to children and/or vulnerable adults as defined by the Disclosure and Barring Service (DBS). It will therefore be necessary to apply for and be in receipt of a satisfactory **enhanced DBS check** of the post holder. **(this statement relates to patient facing clinical role)**
- The Trust requires all roles requiring DBS check, to have a satisfactory DBS recheck every three years
- The Trust requires all new starters to subscribe to the DBS update service where it is a requirement of the role.
- Be responsible for maintaining own vaccinations/Hepatitis B immunity.
- Safeguard patient confidentiality at all times including adherence to the Data Protection Act.
- Attend the Trust statutory refresher courses as necessary
- This post is subject to the terms and conditions of employment of Kettering General Hospital NHS Foundation Trust.
- Be aware of the responsibility of all employees to maintain a safe and healthy environment for patients, visitors and staff.
- Ensure that all duties are carried out to the highest possible standard, and in accordance with current quality initiatives within the area of work and the Trust Equality, Diversity and Inclusion Strategy.
- Have a commitment to identifying and minimising risk, report all incidents and report to manager any risks which need to be assessed.
- Any other duties commensurate with the grade and in line with the requirement of the post.
- This job description reflects the present requirements of the post and it does not form part of the contract of employment. If the duties of the post change and develop the job description will be reviewed and will be subject to amendment, in consultation with the postholder. Appropriate notice of such changes will be given.

### Confidentiality, Data protection and data quality

General Data Protection Regulation (GDPR) safeguards the handling of information held in both electronic and manual filing systems and it is the duty of all staff employed by the Trust to:

- uphold its principles; and
- adhere to Trust policies and to maintain strict confidentiality at all times

It is a requirement of employment with the Trust that you must comply with the obligation of confidentiality in line with our Staff Privacy Fair Processing Notice, Patient Privacy Notice and Information Governance policies and procedures.

All staff have a responsibility to ensure that personal data is accurate, held securely and consent is gained (where appropriate).

### Safeguarding Children & Adults at Risk

We are committed to safeguarding and promoting the welfare of children, young people and adults at risk. All staff and volunteers are therefore expected to behave in such a way that supports this commitment. You will be responsible for safeguarding the interests of children and adults who you come into contact during your work. To fulfil these duties, you will be required to attend training and development to recognise the signs and symptoms of abuse or

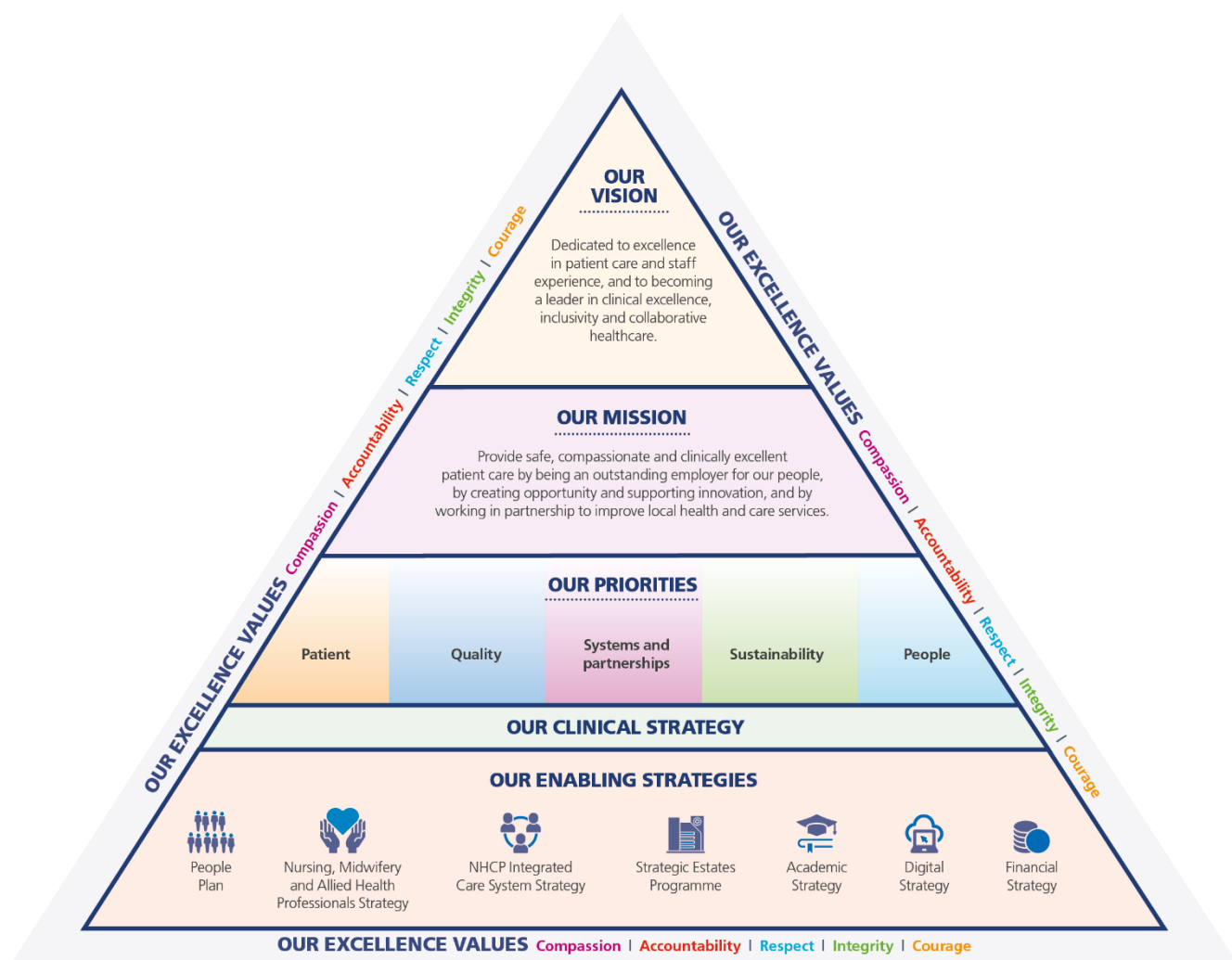
individuals at risk, to follow local and national policy relating to safeguarding practice and to report and act on concerns you may have appropriately.

## Our Vision and Values

Kettering General NHS Foundation Trust and Northampton General Hospital NHS Trust are both part of the University Hospitals of Northamptonshire NHS Group. Both hospitals are separate hospitals/employers with hospital board and leadership. We share a group executive team leading on a shared vision, mission, priorities, strategies and Dedicated to Excellence Values.

Please visit the following websites for more information about working for us:

- [Kettering General Hospital NHS Foundation Trust](#)
- [Best of Both Worlds Northamptonshire](#)
- [University Hospitals Northamptonshire NHS Group](#)



We care about our patients and each other. We consistently show kindness and empathy and take the time to imagine ourselves in other peoples shoes.



Accountability

We take responsibility for our decisions, our actions and our behaviours. We do what we say we will do, when we say we will do it. We acknowledge our mistakes and we learn from them.



Respect

We value each other, embrace diversity and make sure everyone feels included. We take the time to listen to, appreciate and understand the thoughts beliefs and feelings of others.



Integrity

We are consistently open, honest and trustworthy. We can be relied upon, we stand by our values and we always strive to do the right thing.



Courage

We dare to take on difficult challenges and try out new things. We find the strength to speak up when it matters and we see potential failure as an opportunity to learn and improve.

Shortlisting Criteria	Essential	Desirable
<b>Education, Training &amp; Qualifications</b>		
Educated to PTP/Apprentice level or equivalent or working towards formal qualification	x	
	x	
<b>Knowledge &amp; Experience</b>		
Able to perform a range of non-invasive diagnostic tests and analyse the results	x	
Rhythm recognition	X	
Clinical experience in Cardiac Investigations	x	
<b>Skills</b>		
Knowledge of using databases for Cardiac Investigations	x	
Daily planning and organising tasks	x	
Recognising when to ask for senior assistance	x	
	x	
<b>Key Competencies/ Personal Qualities &amp; Attributes</b>		
Excellent communication skills	x	
Flexibility	x	
Self-reliance	x	
Eagerness to learn and expand knowledge	x	
Ability to work well in a team	x	
Approachable and caring	x	