

Job Information Pack

Post: Consultant Gastroenterologist



York and Scarborough Teaching Hospitals NHS Foundation Trust

Medical Staffing Team contact number: Maria Lambert 01723 342973

Job Information Pack

Contents

Section 1	Position
Section 2	Introduction
Section 3	Person Specification
Section 4	Job Description and Principle Duties of the Post
Section 5	Job Plan Information
Section 6	Terms and Conditions of Employment / Additional Requirements
Section 7	Trust Information
Section 8	Visits
Section 9	About Scarborough, York and the Yorkshire Coast

Section 1: Position

Job Title:	Consultant Gastroenterologist
Work Base:	Scarborough Hospital
Clinical Directorate:	Medicine Care Group
Clinical Specialty:	Gastroenterology
Reports to:	Clinical Director
Accountable to:	Medical Director

Section 2: Introduction

From Simon Morritt, Chief Executive Officer



York and Scarborough Teaching Hospital NHS Foundation Trust provides a comprehensive range of acute hospital and specialist healthcare services for approximately 800,000 people living in and around York, North Yorkshire, North East Yorkshire and Ryedale - an area covering 3,400 square miles.

Our annual turnover is approaching £0.5bn. We manage eight hospital sites and have a highly skilled workforce of around 9,000 staff working across our hospitals and in the community.

We are a NHS Foundation Trust. Foundation trusts operate independently of the Department of Health, but remain part of the National Health Service. This gives us greater freedom and more formal links with patients and staff.

Our vision is simple and guides us in everything that we do - we want to be collaborative leaders in a system that provides great care to our communities.

To deliver our vision, we will deliver safe, quality services in partnership with our communities, live our values, deliver excellent integrated care through the transformation of services, lead the way in education, research and innovation to continuously improve care and provide a rewarding place to work.

As a partner in the Humber Coast and Vale Health and Care Partnership our collective ambition is to start well, live well, age well. We want everyone in our area to have a great start in life and to have the opportunities and support they need to stay healthy and to age well. To achieve this we are working hard to make the necessary changes to our local health and care system so that it can become better at helping people to stay well for longer and provide good quality treatment and care to those who need it both now and in the future.

Our new £10million flagship Endoscopy Unit in York is one of the most modern and largest endoscopy units in England. The Unit has been designed to increase capacity to meet growing demand, improve the efficiency of patient flow and enhance the patient experience. The new unit will deliver improvements to diagnostic and therapeutic endoscopy waiting times and increase the range of procedures offered, meaning fewer patients will have to travel to Leeds or Hull.

Scarborough Hospital is benefitting from a £40 million share of funding, following a successful bid by the Trust for capital investment as part of the Humber, Coast and Vale Health and Care Partnership. The funding will enable the creation of a Combined Emergency Assessment Unit, where staff from a range of medical specialties can work side-by-side in a single assessment area, close to the front door and diagnostic support.

The Unit is being created alongside the Emergency Department and the on-site Urgent Treatment Centre, creating a comprehensive and integrated urgent and emergency care hub. This scheme will bring our total investment in our East Coast buildings and infrastructure to over £80 million since 2012.

As a Trust we are unashamedly ambitious in what we seek to achieve in the coming years; we know that what unites our 9,000 staff is our common purpose of providing outstanding patient care. If you believe you share our passion and drive for excellence and have the experience we seek, we look forward to receiving your application for the position.

Kind regards

A handwritten signature in black ink, appearing to read 'S Morritt', with a stylized, sweeping flourish at the end.

Simon Morritt
Chief Executive Officer

Section 3: Person Specification

	ESSENTIAL	DESIRABLE
Qualifications	<ul style="list-style-type: none"> • Hold a medical degree • MRCP or equivalent qualification • Registered with and holds a licence to practice with the General Medical Council • Entry on the GMC Specialist Register in Gastroenterology medicine via; <ul style="list-style-type: none"> - CCT (proposed CCT date must be within 12 months of interview) - CESR 	<ul style="list-style-type: none"> • MD or equivalent Higher Degree or evidence of relevant research • Ability to supervise postgraduate research • Substantive NHS experience • Experience of teaching LAY groups and paramedical staff
Clinical practice/ competence	<ul style="list-style-type: none"> • Ability to demonstrate a high level of clinical experience in Gastroenterology +/- general medicine • Knowledge of good medical practice and General Medical Council requirements • Is able to work effectively in spite of pressures • Demonstrates a sound knowledge of clinical governance practice 	<ul style="list-style-type: none"> • Experience of working in or setting up a clinical decision unit service
Mentoring and Teaching	<ul style="list-style-type: none"> • Experience of teaching undergraduate and post graduate trainees • Ability to teach clinical skills • Experience of undertaking audits and presenting their findings • Experience of supervision of postgraduate trainees • Ability to critically review research 	<ul style="list-style-type: none"> • Experience of supervising SpRs/specialist trainees • Publications in peer review journals • Experience of teaching basic clinical skills to undergraduates • Experience of teaching lay groups and paramedical staff

Personal Development Drive	<ul style="list-style-type: none"> • Commitment to continuing professional development 	
Problem Solving	<ul style="list-style-type: none"> • Ability to apply research findings to clinical problems. 	
Leadership	<ul style="list-style-type: none"> • Is able and willing to take on a leadership role • Capable of building trust and confidence • Strategic thinker • Enquiring, critical approach to work • Willingness to undertake additional professional responsibilities to local, regional or national levels • Ability to organize and manage the department targets • Ability to contribute to change management agenda and take a leading role 	<ul style="list-style-type: none"> • Familiarity within issues of service organisation and development
Team Work	<ul style="list-style-type: none"> • Works effectively with others towards shared goals, welcoming diverse perspectives • Co-operates with colleagues from all disciplines • Ability to work in a multi-disciplinary team • Willingness to work with consultant colleagues and management to maintain and develop a comprehensive service. 	
Communication	<ul style="list-style-type: none"> • Communicates with and relates to others effectively 	
Self awareness	<ul style="list-style-type: none"> • Is open to different ideas and is willing to learn and develop • Seeks new and better ways to do things 	

Ability to work under pressure	<ul style="list-style-type: none"> • An ability to cope with stressful situations in a calm and practical way • Can be reflective rather than reactive • Can seek appropriate information and support 	
Work Ethic	<ul style="list-style-type: none"> • Works diligently and efficiently to deliver high quality service • Is positive and well-motivated • Takes responsibility for delivering results • Adheres to high ethical standards • Personal time management skills 	
Patient experience	<ul style="list-style-type: none"> • Contributes to improving patient's experience • Involves patients in decisions about their care • Ability to work in partnership to deliver a patient centered service • Demonstrate an understanding and willingness to embrace user involvement 	
Organisational awareness	<ul style="list-style-type: none"> • Understands the wider organisation and understands and values the need for efficient use of resources 	
Other	<ul style="list-style-type: none"> • Able to make own arrangements for travel between working sites. • Willing to reside within a distance of 30 minutes or 10 miles by road from their principal place of work, unless agreed otherwise 	

Section 4: Job Description and Principle Duties of the Post

PRINCIPAL DUTIES OF THE POST

The principle duty of this post is to provide a comprehensive clinical service to patients within the trust area.

1. To, at all times, comply with the GMC requirements of Duties of a Doctor
2. To ensure that patient confidentiality is maintained at all times.
3. To undertake duties as defined within the attached job plan in so far as practicable and in agreement with your clinical director.
4. To be responsible and managerially accountable for the reasonable and effective use of any Trust resources that you use and influence, and professionally accountable to the Medical Director.
5. On commencement to ensure personal attendance at the Trust's Corporate Induction.
6. To participate in the Trust's statutory and mandatory training programme
7. To fully participate in the Consultant Peer Support Scheme and ensure personal attendance, when invited, at the Consultant Development Programme during your first year in post.
8. To be responsible for the clinical management of in and out patients under your care.
9. To facilitate research and ensure that all IP rights of the Trust are observed where applicable

Teaching & Training

10. To share responsibility with other Consultants for the recruitment, appointment and supervision of junior medical staff in accordance with Trust policies.
11. To devote time on a regular basis for teaching and training of junior medical staff, contributing as appropriate to post-graduate and continuing medical education.

12. To devote, through agreement time on a regular basis for teaching and training of medical students as part of agreed teaching agreements with Hull York Medical School.

Management & Governance

13. To be responsible for the management, appraisal and discipline of junior doctors who are attached to you, after taking appropriate advice, where appropriate.
14. To maintain personal and professional development. The post holder will be expected to register with their respective Royal College for the purpose of CME/CPD and to fulfil the requirements of that registration.
15. To provide advice, as required, to the Executive and Trust Boards and to General Practitioners and other interested parties, on the provision and planning of clinical services locally, regionally and nationally in keeping with confidentiality agreements relating to Trust business.
16. To co-operate in the present agreed framework of management arrangements in York.
17. To fully participate in clinical governance arrangements across the Trust including participation in clinical audit, research (where appropriate), pursuing an agreed agenda with colleagues and the Trust Board and fully co-operating in implementing the results in order to achieve best practice.
18. To participate, on at least an annual basis in consultant appraisal and job planning reviews.
19. To comply with Trust policies and procedures where appropriate.
20. To ensure that all intellectual property rights of the Trust are observed.
21. Detailed working knowledge of safeguarding agenda, and its relevant legislations, policy and guidance as required.

SUPPLEMENTARY INFORMATION

GASTROENTEROLOGY DEPARTMENT

The Gastroenterology Department sits within the Internal Medicine Directorate, one of four directorates within the Trusts Medical Care Group

Management Team:

- Care Group Director – Dr Gary Kitchen

- Associate Chief Operating Officer – Richard Agyekum-Sakyi
- Chief Nurse – Freya Oliver
- Clinical Director (Scarborough) – Dr Tim Houghton
- General Manager – Paul Rafferty
- Matron – Andy Whitfield

Consultant Team:

- Dr Ajay Muddu
- Dr Junaid Khan (Associate Specialist)

Speciality Doctor:

- Dr Junaid Khan
- Dr Nabeel Akhtar

IBD Nurse Specialist Team:

- Maxine Rawle
- Neil Roberts
- Laura Probert-Foster

The Gastroenterology Department consists of:

- Dedicated 15 bed ward
- 2 room endoscopy suite on the Scarborough site
- 1 room endoscopy suite on the Bridlington site

The successful applicant will contribute to the specialist gastroenterology services of the Trust in both in-patient and out-patient settings. He/she will be working with the rest of the multi-professional Gastroenterology team in a wide range of activities including ensuring timely management of cancer pathways. You will also contribute to the general medical on call rota.

Scarborough Hospital is an integral part of the Hull/York Medical School (HYMS). There is a dedicated medical school teaching unit on the Scarborough site. The appointee will be encouraged to contribute to this undergraduate teaching, but a formal interest in medical education is not a requirement. However, there are excellent opportunities to pursue a teaching interest within the wider medical school if desired.

As a newly appointed Consultant you will participate in the Consultant Development Programme that offers you support in fulfilling Consultant role. You will also be offered access to the Trusts coaching scheme for those wishing to access further support to facilitate your own personal or career development.

Because we are a teaching hospital we focus on educating the next generation of medical professionals, and foster an atmosphere of learning that can benefit everyone

working with us. Whether you're the teacher or the student, the constant focus on growth and improvement is a huge source of inspiration. Because everyone is learning, there's also a larger element of teamwork among staff, creating a more fulfilling work environment. We are a very friendly and welcoming multidisciplinary team.

OUR NEW URGENT & EMERGENCY CARE FACILITY



This is an exciting time to join our rapidly growing team on the east coast. We are currently undergoing an exciting £47 million pound project to offer high quality modern facilities and designed to create the best environment to care for our patients, which will incorporate a newly commissioned acute respiratory ward area are on the first floor.

The project will see the creation of a new urgent and emergency care unit which would see surgeons and the medical staff working together at the front door of the emergency unit. This means we can improve and streamline how patients are assessed, admitted and treated, which should reduce the time that people wait in the department, and ultimately improve patient safety.

The new urgent and emergency care facility is scheduled to open early 2024.

Visit <https://lnkd.in/dK5pq39t> to take the virtual tour.

Section 5: Job Plan Information

Individual job plans will be discussed with the post holder on appointment, with the Clinical Director to finalise the job plan which will become operational on commencement. All jobs plans are agreed in line with the Trusts Job Planning Principles.

Job Planning Principles

Activity	PAs	Comments
CPD	1.0PA	Minimum of 50 hours to meet GMC requirements for revalidation. Statutory and Mandatory requirements Annual appraisal Contribution to in-house education of trainee's Departmental Meetings
Quality Improvement	0.25 PA	To include: <ul style="list-style-type: none"> • Preparing governance ½ days, mortality meetings, NCEPOD, CEMaCH, NICE etc. • Evidenced Quality Improvement work is mandatory for revalidation. • As per GMC guidance, Quality Improvement activities should be robust, systematic and relevant to the individual's work. They should • include an element of evaluation and action • and, where possible, demonstrate an outcome or change. • The type of Quality Improvement (e.g. clinical audit, review of clinical outcomes) should be stated. Clinical Governance half days will replace normal duties
Additional SPA activity	0-1PA	To include: <ul style="list-style-type: none"> • Educational / Clinical Supervision • Appraiser • Quality & Safety Lead • Service Development Lead • Research
Direct Clinical Care	7.75-8.75 PA	To include: <ul style="list-style-type: none"> • The delivery of clinical services and administration directly related to patient care. This includes any unsociable shifts that attract the traditional premium time activity.
Additional NHS Responsibilities (ANR)	0	There are currently no Additional NHS Responsibilities associated with this role.
External Duties (ED)	0	There are currently no Additional NHS Responsibilities associated with this role.
Total	10 PAs	

Individual job plans will be discussed with the post holder on appointment, with the Clinical Director to finalise the job plan which will become operational on commencement. All jobs plans are agreed in line with the Trusts Job Planning Principles. An example of what your job plan could look like is given below

	Monday	Tuesday	Wednesday	Thursday	Friday
AM	Gastro Ward Round / Referrals	Outpatient Clinic	SPA	Gastro Ward Round / Referrals	Gastro Ward Round / Referrals
PM	Endoscopy Session	Endoscopy Session		Outpatient Clinic	Admin

Job plans will be reviewed at least annually, following an appraisal meeting. The job plan will be a prospective agreement that sets out a Consultants typical working pattern, duties and responsibilities and objectives for the coming year. It will cover all aspects of a Consultant's professional practice including clinical work, teaching, research, education and managerial responsibilities and external commitments.

Additional programmed activities may be offered to the post holder, up to a maximum of 2 for full time posts, taking the maximum total to 12. Any offer of additional programmed activities will be based on the needs of the service and in line with the Trust objectives and will be reviewed on at least an annual basis.

A core 1.25 PAs of SPA time is provided per week for Consultant and SAS grades. Up to 1PA SPA time to be provided according to the individuals interests.

Private Practice

You should ensure that any private practice commitments are discussed with your Clinical Director and entered into your prospective job plan. Any change to these will need to be discussed between yourself and your Clinical Director and recorded in an amended job plan. Consultants will be required to ensure that they meet the code of conduct for private practice at all times.

Administrative Arrangements

The successful applicant will have secretarial support and office accommodation.

Section 6: Terms and Conditions of Employment / Additional Requirements

The main terms and conditions of employment will be the Terms and Conditions for Consultants (England) 2003, as amended and the General Whitley Council Conditions of Service.

The staff side of the Joint Local Negotiating Committee is a formal sub-committee of the Trust's Senior Medical Staff Committee, approved as the established negotiating machinery of its Senior Medical Staff, in the development of local agreements.

A copy of the terms and conditions of service, and any local agreements, are available for inspection in the Medical Staffing Department based across York and Scarborough Hospitals, or held on the Medical Governance Directorate site via Staff Room (the Trusts Intranet Service).

All posts are subject to the NHS pre-employment check standards. Accordingly all postholders must have satisfactory Occupational Health and Criminal Records Bureau (Enhanced level) clearances. At the interview stage, the postholder will have provided evidence of their identity, right to work in the UK, qualifications and professional registration, and the Medical Recruitment team will have verified their suitability for employment through reference checks.

The post holder will normally be required to reside within ten miles, or within 30 minutes travelling time of their base Hospital. Any variation should be formally documented and agreed with the Medical Director and Medical Staffing.

Section 7: Trust Information

Our History

We became a Foundation Trust on 1 April 2007, which led to significant changes to the overall governance of the organisation and increased the links to the local community through the appointment of governors and members.

We provide acute and community services for approximately 800,000 people living in and around York and Scarborough, providing a range of specialist services over a wider catchment area across North Yorkshire, East Yorkshire and Rydale.

York Hospital and Scarborough Hospital are the main acute hospital sites offering a range of inpatient and outpatient services.

We provide specialist services from other sites and work collaboratively in certain specialties through our clinical alliance with Harrogate and District NHS Foundation Trust, we are also working closely with Hull Teaching Hospital NHS to strengthen the delivery of services across North and East Yorkshire.

The Trust currently employs over 8500 staff across all of our sites.

Scarborough is a vibrant seaside resort on the East Coast of Yorkshire set in beautiful countryside. The local industries include agriculture, fishing and tourism. Scarborough is one of the top ten tourist destinations in England, attracting more than one million visitors during the summer months. There are excellent road and rail links to surrounding towns and cities as well as easy access to the Yorkshire Moors, Yorkshire Dales, the East Yorkshire Wolds and the Coast. Scarborough is easily accessible by car and public transport routes. Scarborough has a number of highly rated schools both in the state and independent sectors.

See the video for more details about the local area: https://youtu.be/_Svs014rAAc

We provide specialist services from other sites and work collaboratively in certain specialties through close working relationships with Hull Teaching Hospital NHS to strengthen the delivery of services across East Yorkshire.

The Trust currently employs over 8500 staff across all of our sites.

HYMS

York Teaching Hospitals NHS Foundation Trust (YTHNFT) is part of the joint undergraduate Hull and York Medical School (HYMS) with partners the University of York, University of Hull and Hull and East Yorkshire Hospitals NHS Trust. The first students commenced in September 2003 and follow a five-year curriculum, which makes strong use of problem based learning techniques. HYMS departments on both of our main Hospital sites provide new and improved teaching facilities for undergraduate students.

Undergraduate Medical Teaching

The Trust is a Teaching Hospital and therefore considers the active participation of consultant and other medical staff in teaching and training to be part of our core activities. Not all consultants will have regular and substantial teaching commitments but all will be involved in related activities from time to time. It is therefore expected that all consultants will be familiar with the principles of effective teaching and will enable the service and colleagues to fulfil their obligations to learn and teach about effective care.

The Trust is an active partner of the Hull York Medical School for teaching medical undergraduates and all consultant medical staff are expected to participate to the level agreed within their service.

Where it is agreed by the Lead Clinician and Clinical Director that the post holder will be significantly involved in delivering undergraduate medical teaching, the following requirements have been agreed with Hull York Medical School:

In accordance with its Policy on Honorary Titles, the Hull York Medical School will award the title of Honorary Senior Lecturer to the Consultant appointed to the role in recognition of their willingness to participate in undergraduate teaching in support of these arrangements. The honorary title will be awarded for a period of 5 years and renewable thereafter as appropriate.

This honorary title will entitle the consultant to request access to the Hull York Medical School, and University premises and facilities, including the use of the Medical School's IT systems and the Universities' library services.

In accepting the role, the appointee will undertake to satisfy the criteria for the award of an Honorary University title, which will include:

- a) Contribution to teaching and assessment (including examinations) of medical students as agreed with the Clinical Director and Hospital Clinical Dean.
- b) Attend the Hull York Medical School tutor induction course or equivalent within the first 2 years (not required for renewals).
- c) Show a commitment to learning and teaching by having attended at least 2 relevant courses over 5 years (as identified on an individual basis and as relevant in that particular field). This may include, for example, training in lecturing, student assessment or, peer reviewing.
- d) Participate in peer reviews or a similar review of teaching, as advised by the Hospital Clinical Dean.

To discuss teaching and training opportunities at the Trust please contact Dr Vijay Jayogopal (HYMS Clinical Dean) on 01904 725727 or Paul Gibson Simpson (Education Manager) on 01904 726471.

Post Graduate Medical Centres

YTHNFT have Post Graduate Medical Centres on both the main sites in York and Scarborough, with up to date audiovisual equipment. There is a regular programme of meetings in all disciplines including a weekly multidisciplinary meeting. There is a Director of Postgraduate Education who is responsible to the Executive Medical Director and who is supported by the Postgraduate Centre Manager and Secretarial staff. There are advisors in General Practice and Dental Practice as well as the individual college tutors.

YTHNFT recognises the importance of continuing professional development and supports SAS staff. The Trust is committed to supporting CPD requirements as laid down by Royal Colleges both in terms of time and financial support.

There are good Medical and Nursing libraries available on both hospital sites.

Research

YTHNFT is research active hospital and is committed to embedding clinical research into every practice. In York and Scarborough alone we have approximately 150 research studies open to recruitment, with around 50 studies opening each year. We recruit about 4000 patients a year into clinical trials; these patients are recruited across a wide range of specialties. Scarborough hospital is currently participating in a research initiative to allow local patients better access to clinical research, and research enthusiastic clinicians will be actively supported in research ambitions.

For further information regarding Research opportunities at the Trust please contact Lydia Harris (Head of Research and Development) on 01904 726606.

Staff Benefits

As a Trust employee you will be entitled to a wide variety of discounts, offers and schemes in the following areas:

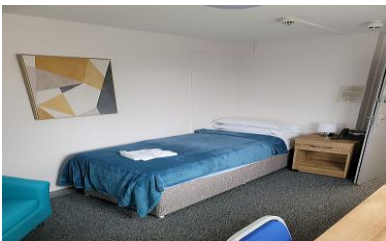
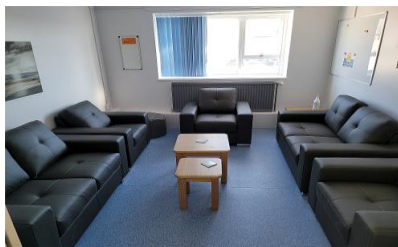
- Up to £18,000 relocation package
- Fairness Champions – Members of staff who help promote equality, diversity and human rights
- Staff Shop
- Retirement Benefits
- Pets Corner – Dog walking and recreational field discounts
- Holidays and Accommodation – UK Breaks and hotel discounts
- Days and Nights Out – Theatres, Restaurants, Bars, Theme Park discounts
- Travel and Transport – Car lease schemes, Bus tickets discounts
- Funded Projects and Courses
- Home and Garden – Building services and boiler repair discounts
- Events and Publications
- Staff Wellbeing and support – Employee health checks
- Staff Lottery
- Childcare – Vouchers, On-site nursery (Scarborough)
- Health & Beauty and Fitness – On-site Massage (York), Subsidised complimentary therapies, Corporate club memberships
- Personal Finance and Salary Sacrifices

This list is in no ways exhaustive. Further information about the benefits of working for the Trust can be found on the Trust website in the 'working for us' section.

Scarborough Doctors Out of Hours / Wellbeing Facilities

The out of hours and wellbeing facilities at Scarborough have recently undergone a major refurbishment to provide modern, clean facilities and include:

- 8 out of hours bedrooms
- Quiet room
- Clinical support office
- Separate male / female functional prayer facilities for daily use
- Separate male / female Junior doctors' WC / change / shower rooms with Wudu wash stations installed to support ritual ablutions before prayer
- Doctors' out of hours WC / shower / changing room
- Doctors' study room
- Junior doctors' lounge
- Consultant and SAS grade doctors' lounge
- Doctors' mess kitchen



At Scarborough Hospital we also have limited single room hospital accommodation available at Cherry Trees, Heycliffe House and the Orchards booked through our facilities management team.

Section 8: Visits

As part of the Trust's protocol for appointments, applicants, or prospective applicants, are advised, prior to applying for the post, to contact the following:

Dr Tim Houghton – tim.houghton@york.nhs.uk 01723 385152

Or

Dr Ajay Muddu – ajay.muddu@york.nhs.uk 01723 236190

Section 9: About Scarborough and the Yorkshire Coast

Scarborough



Scarborough is the UK's original seaside spa resort and continues to be a popular holiday destination due to its history and its beauty. These same reasons make it a great place to live.

The South Bay is popular with tourists whilst the North Bay is widely regarded as the 'locals' beach' and is a great place to relax or try a variety of watersports with surf schools running a number of activities for adults and children alike. Outdoor activities and open park spaces such as Peasholm Park, make it a great place to raise a family.

The Scarborough Open Air Theatre is the largest open air theatre in Europe and attracts a variety of acts over the summer months. Past performers include Sir Elton John, Sir Tom Jones, Britney Spears, Kylie Minogue, McFly, Niles Rogers, George Benson, Sting, Pulp and Blondie to name but a few.

Scarborough is also home to the famous theatre-in-the-round, the Stephen Joseph Theatre, which was the first of its kind in the world providing a truly unique experience as the audience is seated all around the stage. We also have the Spa Complex where live theatre, comedy shows and music performances regularly take place.

The town has a thriving sports scene with the Cricket Ground hosting a number of County matches in addition to the annual Scarborough Cricket Festival.

If you are interested in Golf, Scarborough boasts at least 3 courses (South Cliff, North Cliff and North Bay) plus a championship course close by, Ganton Golf Club, one of the finest inland links courses in the UK, having hosted competitions such as the 1949 Ryder Cup, the 2000 Curtis Cup and the 2003 Walker Cup.

Scarborough Rugby Club and Scarborough Athletic Football Club both have a number of junior teams in addition to their senior teams and are both based at stadiums with impressive leisure facilities including gyms and swimming pools.

On the same site as the football ground stands Scarborough UTC and Coventry University (Scarborough Campus). Alpamare water park and spa has indoor and outdoor pools, as well as slides and is a great place to spend time as a family. Close by is the Sea Life centre where you can discover an amazing underwater world. Just outside Scarborough, Wykeham Lakes has recently opened a waterpark with swimming, sailing, kayaking and wakeboard facilities. There is also a climbing wall, cycle trails and fishing.

Dalby Forest, in the North York Moors, offers family fun with mountain biking and the Go Ape treetop challenge, treetop adventure and forest segways.

In and around Scarborough there are a number of state schools, as well as two co-educational Day and Boarding schools, Scarborough College and Fyling Hall near Whitby, that provide education for ages 3 to 18. Scarborough Hospital also has an on-site nursery called Kinder Place Nursery.

There are a number of award-winning restaurants both within the town centre and surrounding villages serving a variety of cuisines including Turkish, Indian (including Halal), Chinese and Italian food as well as seafood and gastropubs.

Scarborough is well situated to visit historic towns such as Whitby, made famous by Bram Stoker's Dracula. Not far away is Pickering, home of the famous North Yorkshire Moors heritage railway which has been used as a filming location for such famous films as Harry Potter, Mission Impossible and the most recent Indiana Jones movie as well as many, many television programmes.

There are good transport links to York, Leeds and Manchester (Airport) on the Trans Pennine Express, Hull on Hull Trains and London and Edinburgh on the East Coast Line from York (3 hours). Continental ferry links from Hull to Rotterdam and Zeebrugge are popular weekend destinations.

Countryside

Venture beyond town and city to discover the natural beauty of the countryside,



National Parks and the coast. This diverse region is home to enchanting places including the North Yorkshire Moors, the Wolds, the lively market towns of Helmsley and Malton and historic stately homes including the iconic Castle Howard.

York



York is a vibrant small city, rich in history, culture and internationally renowned for beauty and heritage. It's a lovely place to raise a family and consistently voted one of the best places to live in the UK.

It has excellent rail and road links which ensure easy access to major cities and to the wonderful North Yorkshire countryside and coast. York Hospital is a short walk across the city from the railway station that has frequent services to Leeds, Newcastle and London to name a few. An extensive cycle network offers a pleasant alternative commute to work.

York has a plethora of excellent state and private schools. The top 3 performing state schools in North Yorkshire are accessible from York including one recently credited as "School of the Decade". The two universities in the city are highly renowned.

A variety of sporting activities are available at the new York Community Stadium which is home to a swimming pool, gym, Extreme Climbing Zone and 5-a-side 3G Pitches.

Surrounding countryside affords endless other possibilities including cycling, rowing, kayaking, horse-riding or you could simply enjoy a walk through the many beautiful parks and gardens.

When it comes to eating out, York and the surrounding area has a variety of pubs and restaurant from fine dining at the Ivy, afternoon tea at Betty's or the thriving street food scene at the historic Shambles Market. The surrounding area offers an excellent food scene with fantastic pubs serving high quality local produce, craft ales and wines.

Further information:

<https://www.visitthecityofyork.org>

Discover Scarborough & the Yorkshire Coast

<https://www.discoveryorkshirecoast.com/scarborough/#>

See more of us online



York and Scarborough Teaching Hospitals Foundation Trust



YSTeaching



Yorkteachingnhs



York and Scarborough Teaching Hospitals Foundation Trust