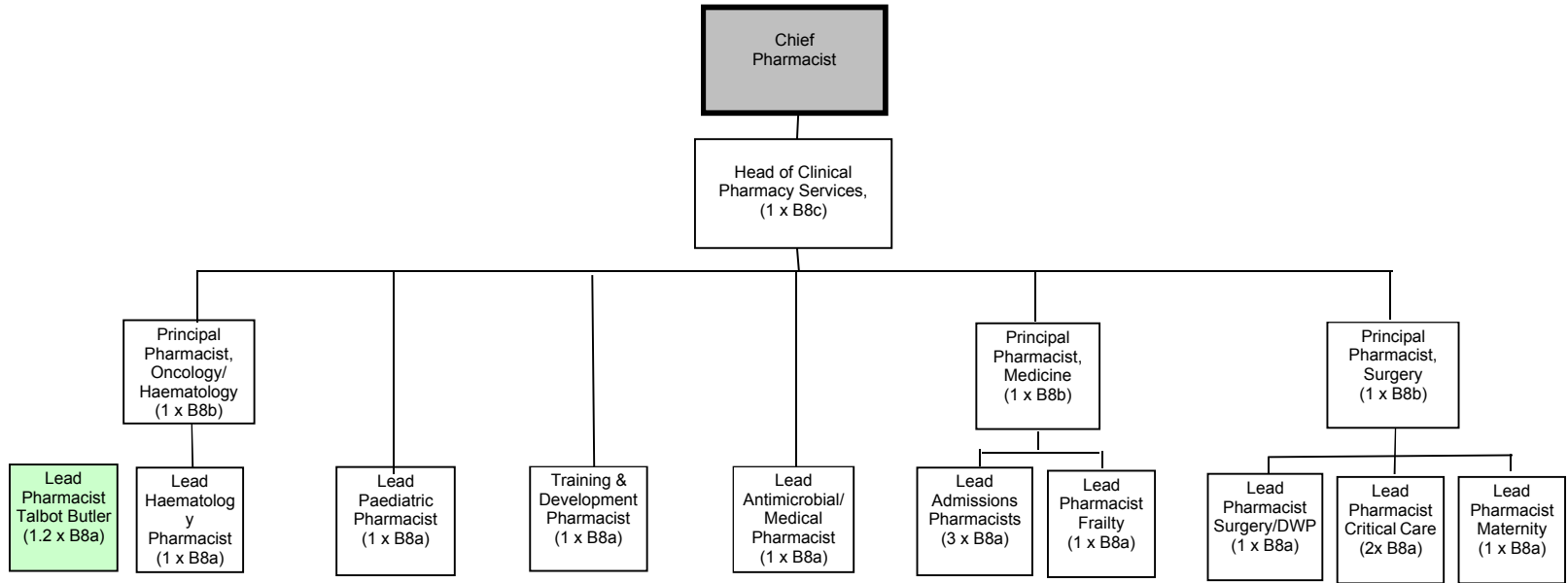


NGH Pharmacy Clinical Services Structure

Senior Clinical Team

Feb-22



Year 2 DWP

Year 3 DWP

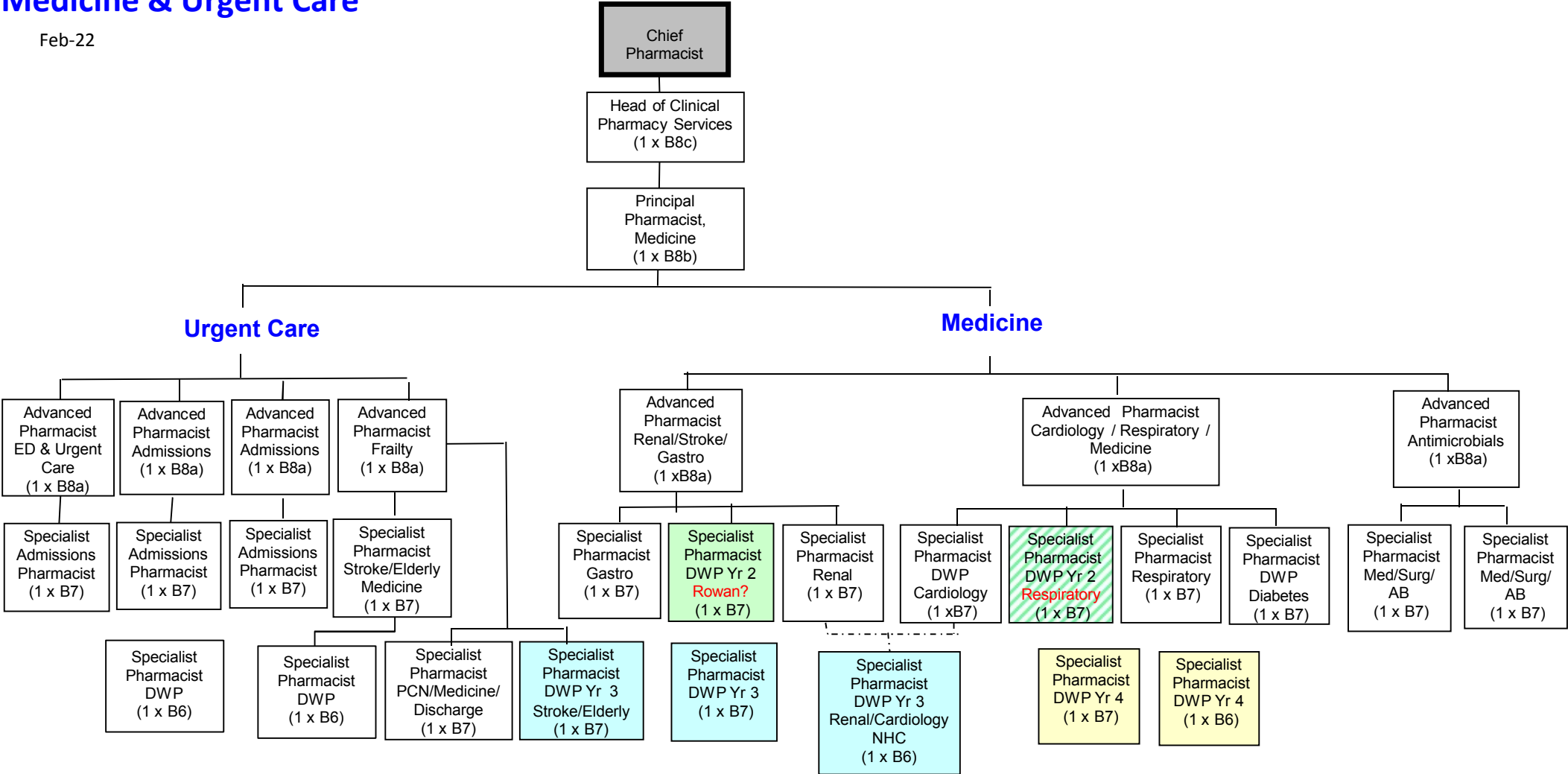
Year 4 DWP

For detailed information on  
Band 5 / 6 / 7 posts refer to  
other tabs

# NGH Pharmacy Clinical Services Structure

## Medicine & Urgent Care

Feb-22



Brampton, Heart,  
Allebone, Eleanor,  
Finedon

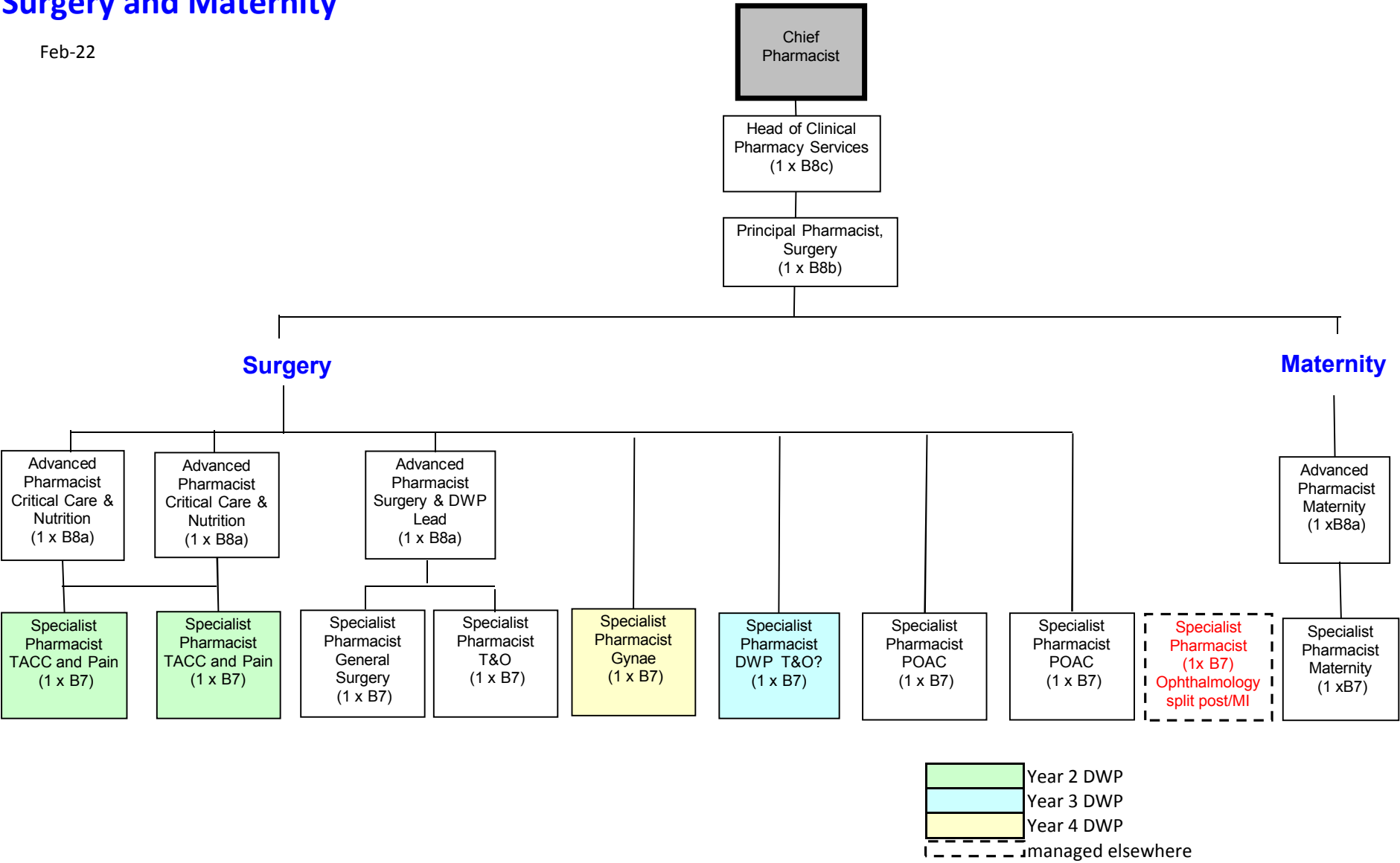
Holcot, Knightley,  
Victoria, Compton

- Year 2 DWP
- Year 3 DWP
- Year 4 DWP
- Different business case

# NGH Pharmacy Clinical Services Structure

## Surgery and Maternity

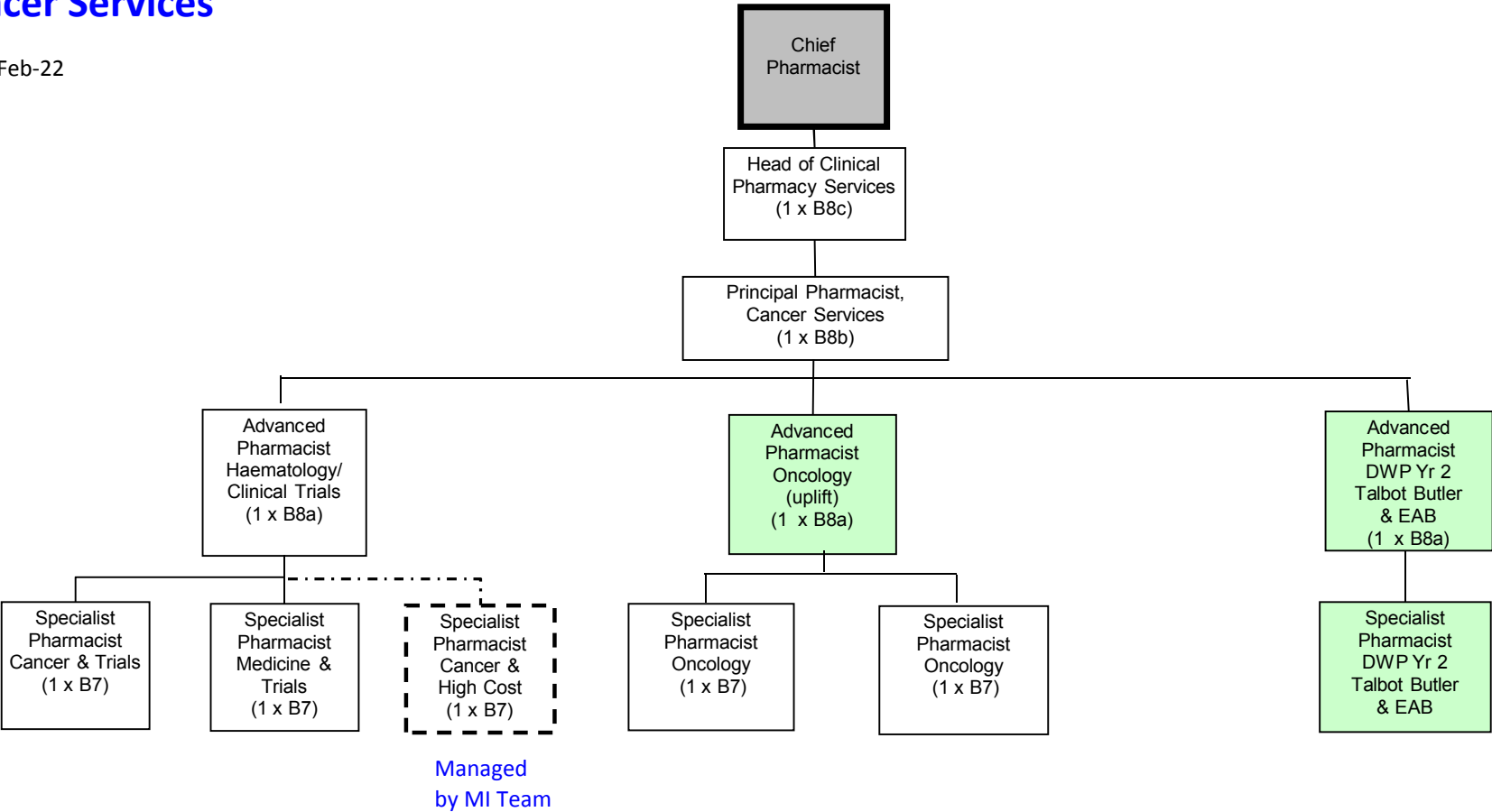
Feb-22



# NGH Pharmacy Clinical Services Structure

## Cancer Services

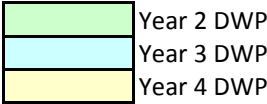
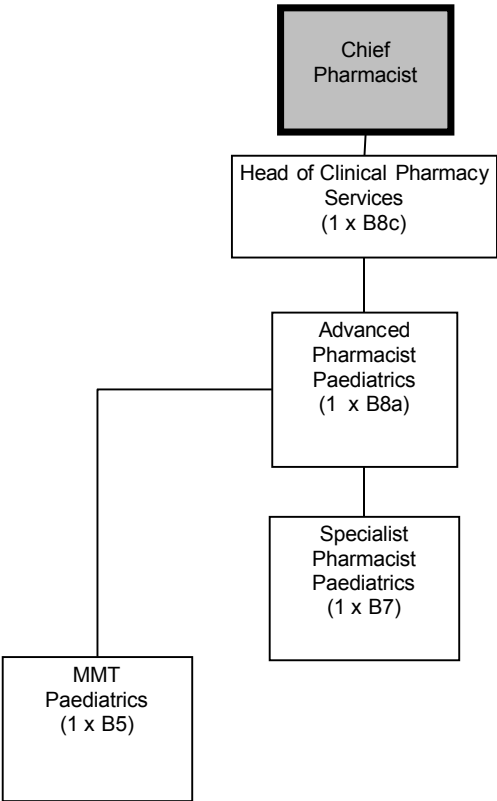
Feb-22



# NGH Pharmacy Clinical Services Structure

## Paediatrics

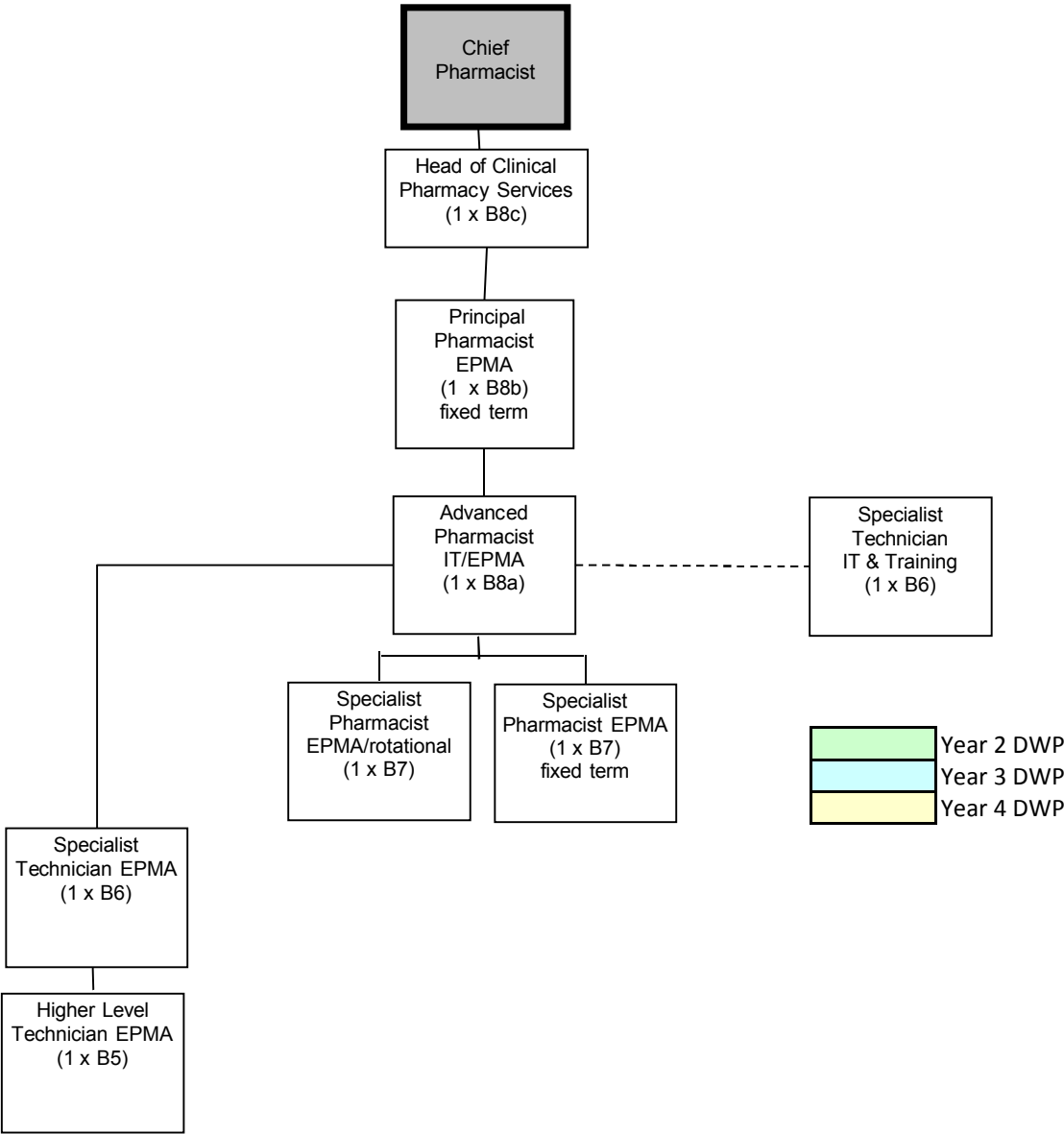
Feb-22



# NGH Pharmacy Clinical Services Structure

IT/EPMA

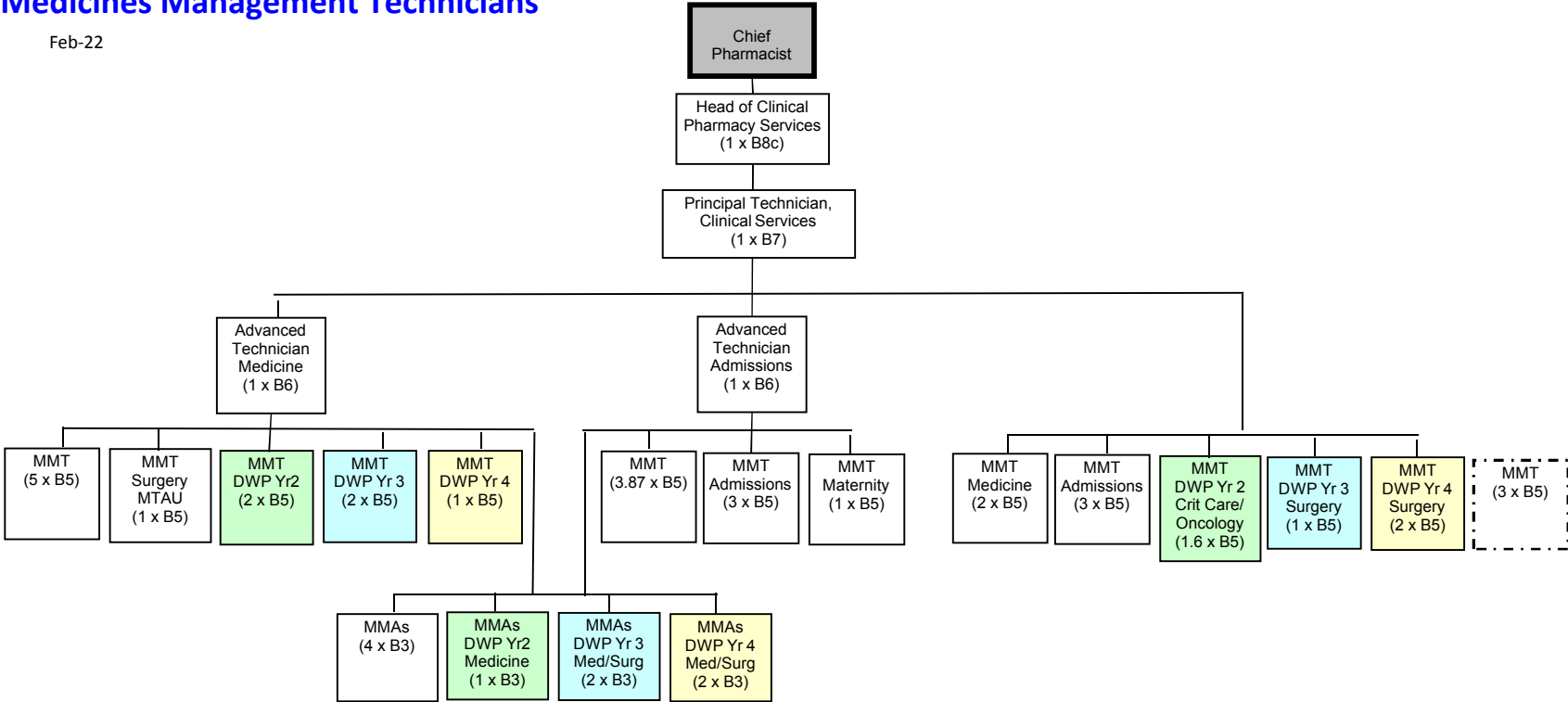
Feb-22



# NGH Pharmacy Clinical Services Structure

## Medicines Management Technicians

Feb-22



Year 2 DWP  
Year 3 DWP  
Year 4 DWP

managed elsewhere